

## A REPORT OF *SUNCUS ETRUSCUS* (SAVI, 1822) (MAMMALIA: *SORICIDAE*) FROM WESTERN UPPER TRACIAN VALLEY, BULGARIA

*Slaveia B. Stoycheva\**, *Dilian G. Georgiev\*\**

*\*NGO Green Balkans, Shesti septemvri Str. 160,  
BG – 4000 Plovdiv, Bulgaria*

*\*\*Department of Ecology and Enviromental conservation, University of  
Plovdiv, Tzar Assen Str. 24, BG – 4000 Plovdiv, Bulgaria*

**Abstract:** In pellets of *Tyto alba* (Scopoli, 1769) collected from Manole village (to the east of the town of Plovdiv, UTM LG27) a single skull of *Suncus etruscus* (Savi, 1822) was found. This finding is the most western known record of the species in Bulgaria.

**Key words:** *Suncus etruscus*, Upper Tracian Valley, Bulgaria.

### INTRODUCTION

The pygmy white-toothed shrew *Suncus etruscus* (Savi, 1822) distribution in Bulgaria was well studied mostly in South-Eastern Bulgaria. The species was found only in this part of the country, and total in 37 UTM-grid squares it was registered (VOHRALIK, 1985; POPOV & NIJAGOLOV, 1991; POPOV, 2000; PESHEV et al., 2004; POPOV et al., 2004; GEORGIEV, 2004). POPOV & NIJAGOLOV (1991) supposed that it could also occur in all of the warmer parts of Struma and Maritza Valleys.

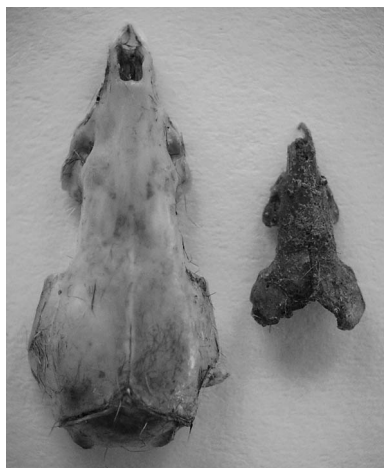
### MATERIAL AND METHODS

On 22.10.2005, pellets of nesting *Tyto alba* (Scopoli, 1769) were collected from Manole village (to the east of the town of Plovdiv, UTM LG27). The pellets (n=21 and separate bone remains) were softened into water to separate the pray items. The small mammals were identified using keys by ПОПОВ & СЕДЕФЧЕВ (2003).

## RESULTS

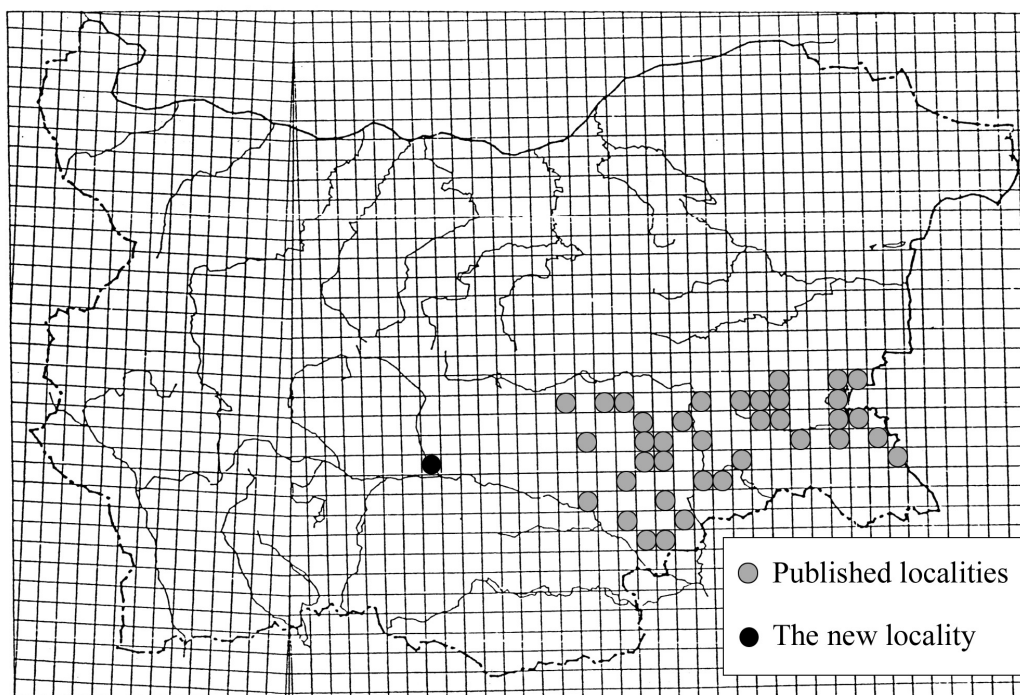
Among chitin remains of *Mantis religiosa* (Linnaeus, 1758) and *Coleoptera* indet., bones of unidentified birds: *Passeriformes* indet., and mammals: *Crocidura leucodon* (Herman, 1780), *Crocidura suaveolens* (Pallas, 1811), *Neomys anomalus* Crabrera, 1907, *Sylvaemus flavicollis* (Melchior, 1834), *Apodemus agrarius* (Pallas, 1771), *Mus* sp., *Microtus* sp., a single fragmentized skull of *Suncus etruscus* was found (Fig. 1).

This finding is the most western known record of the species in Bulgaria (Fig. 2).



**Fig. 1:** The found skull of pygmy white-toothed shrew (*Suncus etruscus*) – right, compared with this one of bi-colored white-toothed shrew (*Crocidura leucodon*) – left.

**Фиг. 1:** Съобщеният череп на етруска земеровка (*Suncus etruscus*) - в дясно, сравнен с череп на белокоремна белозъбка (*Crocidura leucodon*) – вляво.



**Fig. 2:** Known localities of *Suncus etruscus* in Bulgaria.  
**Фиг. 2:** Известни находища на *Suncus etruscus* в България  
(с черен цвят е отбелязано новото находище).

REFERENCES

- GEORGIEV D., 2004. Conservation status of the small mammals (Mammalia: *Insectivora*, *Lagomorpha*, *Rodentia*) of Sakar Mountain (South-Eastern Bulgaria). Trav. Sci. Univ. Plovdiv, Animalia, 40 (6): 153-64.
- PESHEV Ts., D. PESHEV, V. POPOV, 2004. Fauna Bulgarica, Mammalia. Editio Academica "Marin Drinov", Vol. 27, 632pp.
- POPOV V., C. NIJAGOLOV, 1991. A new record of *Suncus etruscus* (Savi, 1822) (Mammalia, *Soricidae*) from Bulgaria. Acta zool. bulg., 41: 69-71.
- POPOV V., 2000. Epigeobiont animal assemblages from two landscapes of the Bulgarian Black Sea coast: relationship to environmental gradients, assemblage structure and biodiversity. III. Small mammals (Mammalia: *Insectivora*, *Rodentia*). Acta zool. bulg., 52 (3): 79-96.
- POPOV V., B. MILTCHEV, V. GEORGIEV, H. DIMITROV, Ts. CHASSOVNIKAROVA, 2004. Landscape Distributioal Pattern and Craniometry of *Suncus etruscus* (Mammalia: *Insectivora*, *Soricidae*) in South-East Bulgaria. Acta zool. bulg., 56 (3): 299-312.
- VOHRALIC V., 1985. Notes on the distribution and biology of small mammals in Bulgaria (*Insectivora*, *Rodentia*). I. – Acta. Univ. Carol. Biol. (1981), 445-561.
- ПОПОВ В., А. СЕДЕФЧЕВ, 2003. Бозайниците в България. Изд. Витоша, 291 с.

**СЪОБЩЕНИЕ ЗА *SUNCUS ETRUSCUS* (SAVI, 1822)  
(МАММАЛИА: *SORICIDAE*) ОТ ЗАПАДНАТА ЧАСТ НА  
ГОРНОТРАКИЙСКАТА НИЗИНА, БЪЛГАРИЯ**

*Славей Б. Стойчева\**, *Дилян Г. Георгиев\*\**

*\*СНЦ Зелени Балкани, бул. "Шести септември" 160, 4000 Пловдив*

*\*\*Пловдивски Университет "Паусий Хилендарски",*

*Катедра Екология и опазване на околната среда,*

*Ул. "Цар Асен" 24, 4000 Пловдив*

*(резюме)*

В погледки на гнездяща *Tyto alba* (Scopoli, 1769), събрани в с. Маноле (източно от град Пловдив, UTM LG27) е установен един череп на *Suncus etruscus* (Savi, 1822). Това е най-западното известно до сега находище на вида в България.

