

SHORT COMMUNICATION

**MONACHA (MONACHA) LIEBEGOTTAE HAUSDORF, 2000
(GASTROPODA: HYGROMIIDAE) IN BULGARIA**

ATANAS IRIKOV*, GEORGY GERDZHIKOV

Department of Ecology and Environmental Conservation, Faculty of Biology, Plovdiv University, 24 Tzar Assen Str., 4000 Plovdiv, Bulgaria (e-mail: irikov@uni-plovdiv.bg)

* corresponding author

ABSTRACT: We report a new locality of *Monacha liebegottae* Hausdorf, 2000. This species has been known until now only on two islands in the north-eastern part of the Aegean Sea. The first establishment of the species outside the Aegean region and its first finding on the European mainland suggests its relict character and probably much broader dispersion in past historical times. We suppose that it is very likely that other continental populations will be found, for example in the European part of Turkey.

KEY WORDS: distribution; Hygromiidae; *Monacha*; new record; zoogeography

The greatest variety of species of the genus *Monacha* Fitzinger, 1833 has been registered in Turkey (HAUSDORF & PÁLL-GERGELI 2009). Furthermore, during the examination of *Monacha* from Turkey fifty species have been identified (HAUSDORF 2000). Until now, only 6 species of *Monacha* have been recorded in Bulgaria; in future research, it is very likely that other species of this genus will be registered (IRIKOV 2009). Here, we report the first finding of *Monacha liebegottae* on the territory of Bulgaria and the European continent (preliminary report in IRIKOV & GERDZHIKOV 2016).

Genus *Monacha* Fitzinger, 1833

***Monacha (Monacha) liebegottae* Hausdorf, 2000**

Locality: Bulgaria (Fig. 1), Sakar Mountain, River Tundzha in the close proximity of the village of Srem, Topolovgrad Municipality (Fig. 2), 42°03'11.0"N, 26°28'26.1"E, 82 m alt., floodplain deciduous forest by River Tundzha, 28 November 2009, collected by G. GERDZHIKOV.

Shell (Fig. 3): Depressed conical globular; the main whorls have clearly visible, plaited growth ribs; brownish corneous in colour; the aperture is pre-

dominantly circular, rather than elliptic; the upper part of the aperture clearly descends downwards; the rim of the aperture is pointed, unexpanded, with a light inner edge; the umbilicus is narrow, almost hidden by the twisted columellar end.

Genital system (Fig. 4): The penis is swollen, clearly distinguishable from the epiphallus, connected to it



Fig. 1. Dissemination of *Monacha liebegottae*: + old occurrences of the species, the islands of Gökçeada and Lesvos in the Aegean Sea; ■ the new occurrence in Bulgaria, Sakar Mountain, map by G. GERDZHIKOV

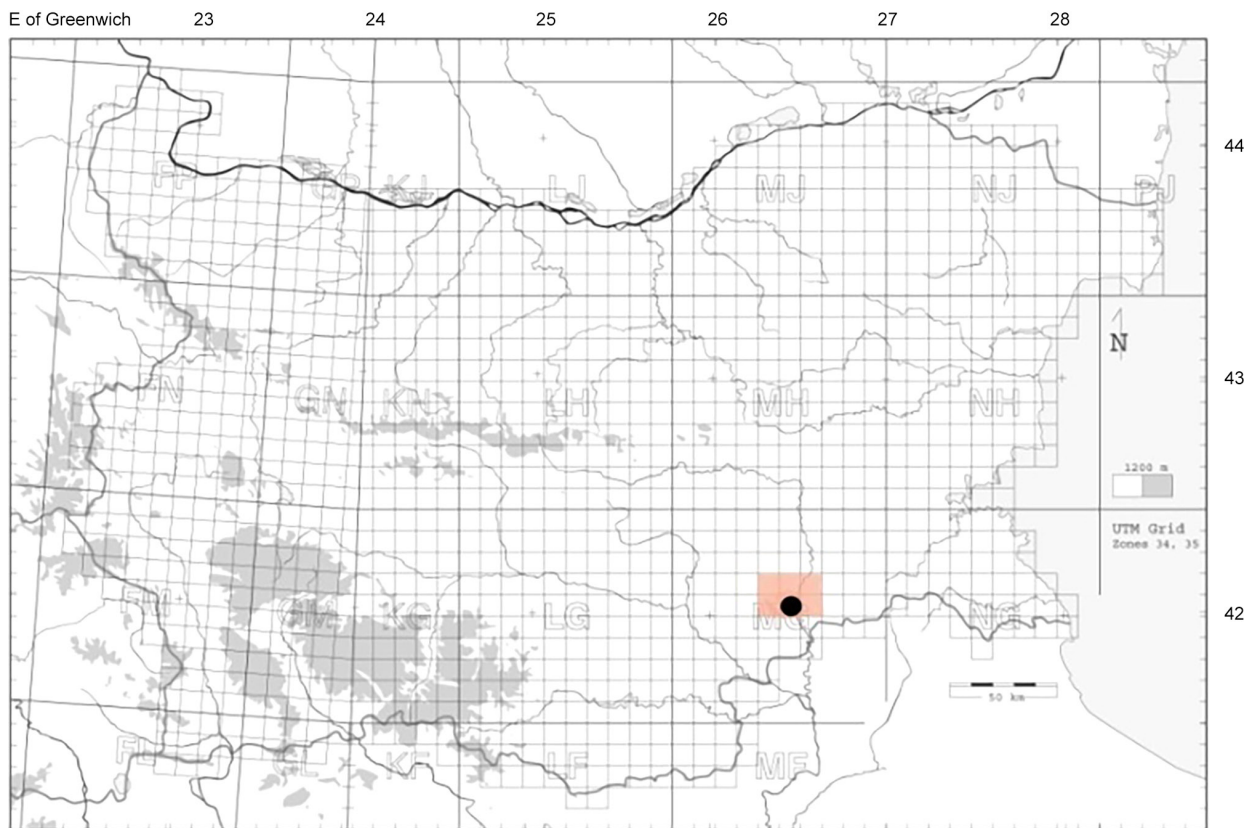


Fig. 2. Occurrence of *Monacha liebegottae* in Bulgaria

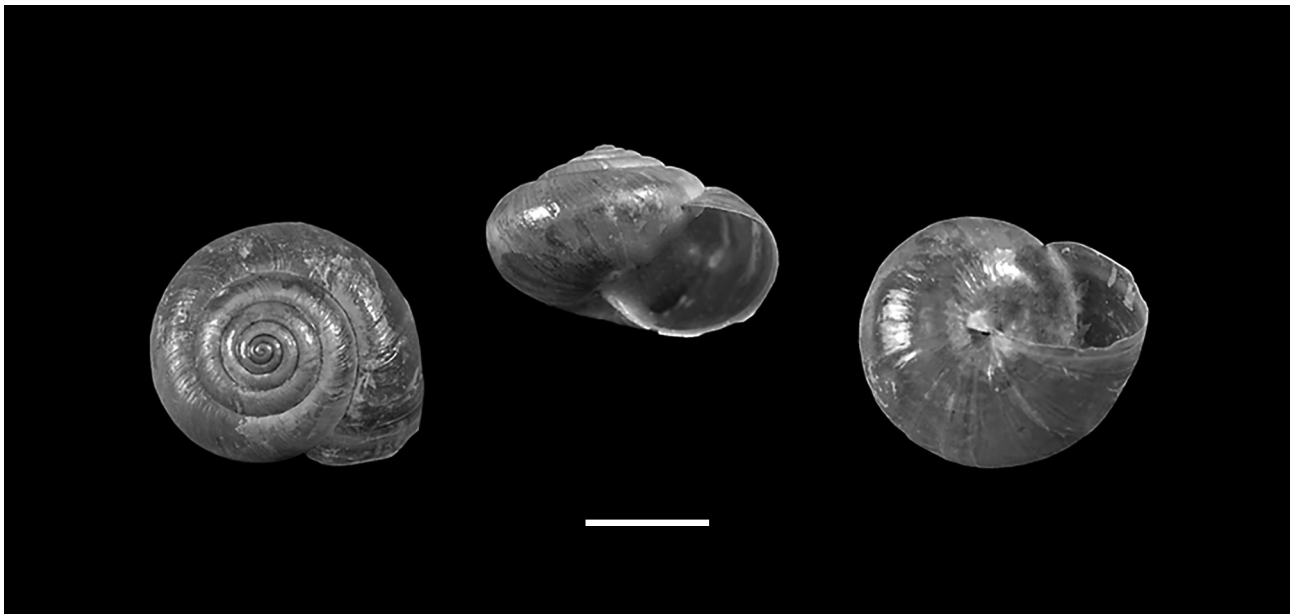


Fig. 3. Shells of *Monacha (Monacha) liebegottae*, Sakar Mountain, in the proximity of the village of Srem (Bulgaria). Scale bar 5 mm. Photo: V. IVANOV

Table 1. Size of some parts of the genitalia of *Monacha liebegottae* (in mm) from Sakar Mountain, River Tundzha in the proximity of the village of Srem (Bulgaria). Abbreviations: ap – vaginal appendix; ep – epiphallus; fl – flagellum; p – penis; v_{ap} – vagina up to the base of the vaginal appendix; v_{gm} – vagina up to the mucous glands; v_t – total length of the vagina

	p	ep	fl	ap	v _{ap}	v _{gm}	v _t
Specimen from Sakar Mt.	2.9	7.5	2.9	3.5	5.2	3.3	8.5
According to HAUSDORF 2000	0.8–2.3	2.5–8.2	1.3–3.3	1.4–2.5	0.5–2.5	0.6–3.0	0.9–4.0



by thin muscle filaments (ligament). The appendix is slender, long, cylindrical and wedges a little higher than the middle of the vagina. The mucous glands are slightly branched and wedge insignificantly proximally from the appendix. The sizes of some of the parts of the genitalia are presented in Table 1, compared with data given by HAUSDORF (2000).

The greatest variety of the species of genus *Monacha* has been identified in Asia Minor, and more specifically, in Turkey (HAUSDORF 2000). Some of these species are widely dispersed in the Asia Minor biogeographical zone, while others are significantly rarer, with local distribution (NEIBER & HAUSDORF 2017). *M. liebegottae*, described by HAUSDORF (2000) is among those with a restricted distribution. During our research on Sakar Mountain, *M. liebegottae* has been registered for the first time on the European continent, the more remarkable since it was previously known only on two islands in the Aegean Sea - Göçeada and Lesvos (Fig. 1). The contemporary disjunctive distribution of the species probably results from its preservation in specific climatic refugia. The first establishment of the species outside the Aegean region and its finding on the European mainland suggests its relict character and probably much broader

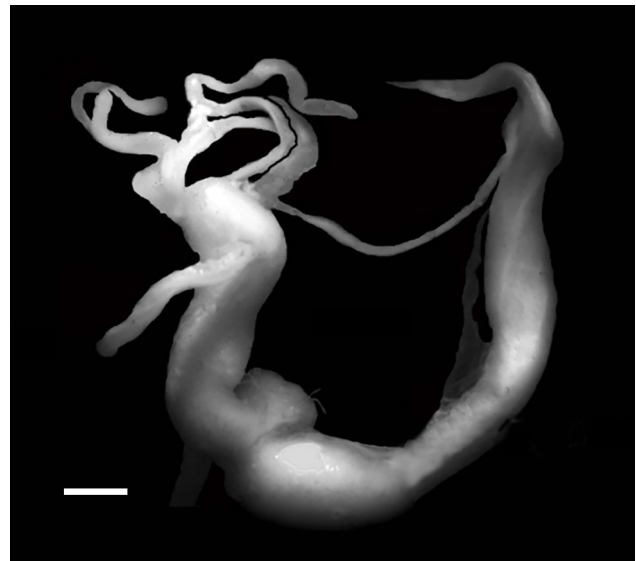


Fig. 4. Genital system of *Monacha (Monacha) liebegottae*, Sakar Mountain, in the proximity of the village of Srem (Bulgaria). Scale bar 1 mm. Photo: B. NIKOLOV

dispersion in past historical times. Thus, it is likely that more localities will be found, for example in the European part of Turkey; this will enable us to learn more about its origins.

REFERENCES

- HAUSDORF B. 2000. The genus *Monacha* in Turkey. *Archiv für Molluskenkunde* 128: 61–151.
<https://doi.org/10.1127/arch.moll/128/2000/61>
- HAUSDORF B., PÁLL-GERGELY B. 2009. *Monacha oecali* new species from Southern Turkey (Gastropoda: Hygromiidae). *Journal of Conchology* 40: 15–17.
- IRIKOV A. 2008. Genus *Monacha* Fitzinger 1833 in Bulgaria (Gastropoda, Pulmonata, Hygromiidae). *Linzer Biologische Beiträge* 40: 785–811.
- IRIKOV A., GERDZHIKOV G. 2016. Molluscs (Mollusca) (terrestrial gastropods and freshwater gastropods and Bivalvia) in Sakar Mountain (Bulgaria). *Historia Naturalis Bulgarica* 23: 195–206.
- NEIBER M. T., HAUSDORF B. 2017. Molecular phylogeny and biogeography of the land snail genus *Monacha* (Gastropoda, Hygromiidae). *Zoologica Scripta* 46: 308–321.
<https://doi.org/10.1111/zsc.12218>

Received: September 27th, 2022

Revised: January 24th & February 23rd, 2023

Accepted: March 3rd, 2023

Published on-line:

